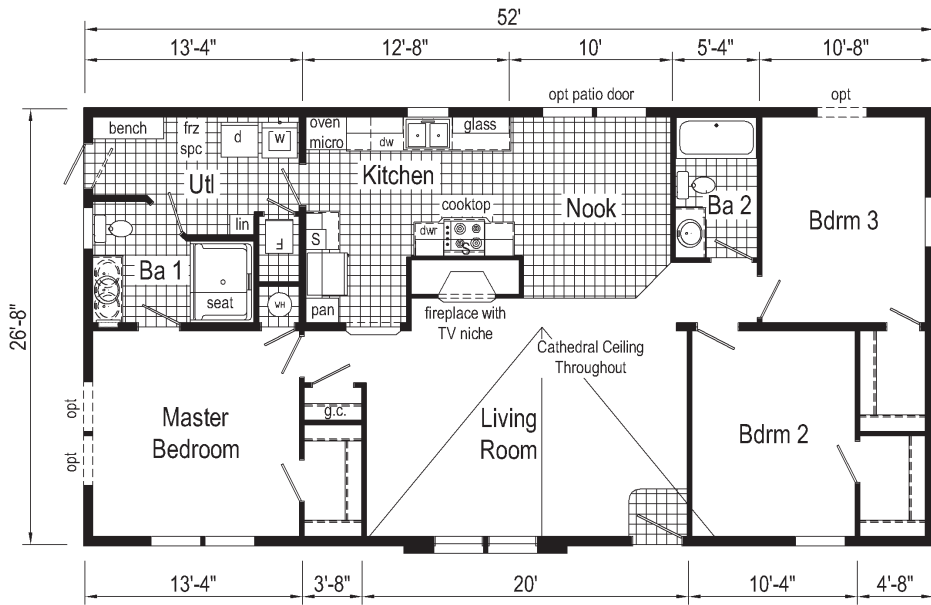


HEARTHSTONE

RANCH HOMES

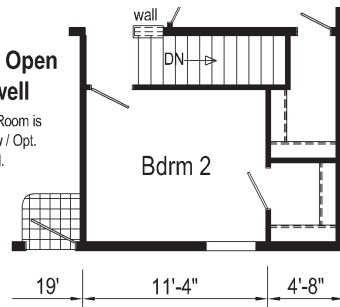




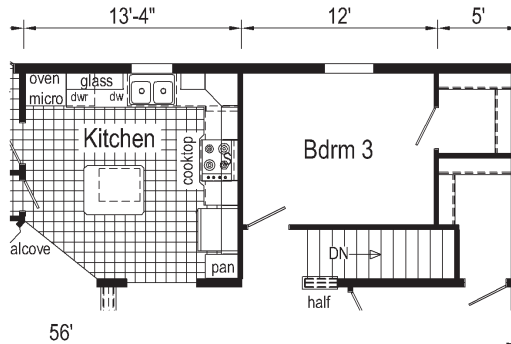
DH501A 2852
Approx 1387 Sq Ft

Optional Open Stairwell

Size of Living Room is reduced 12" w / Opt. Stairwell.

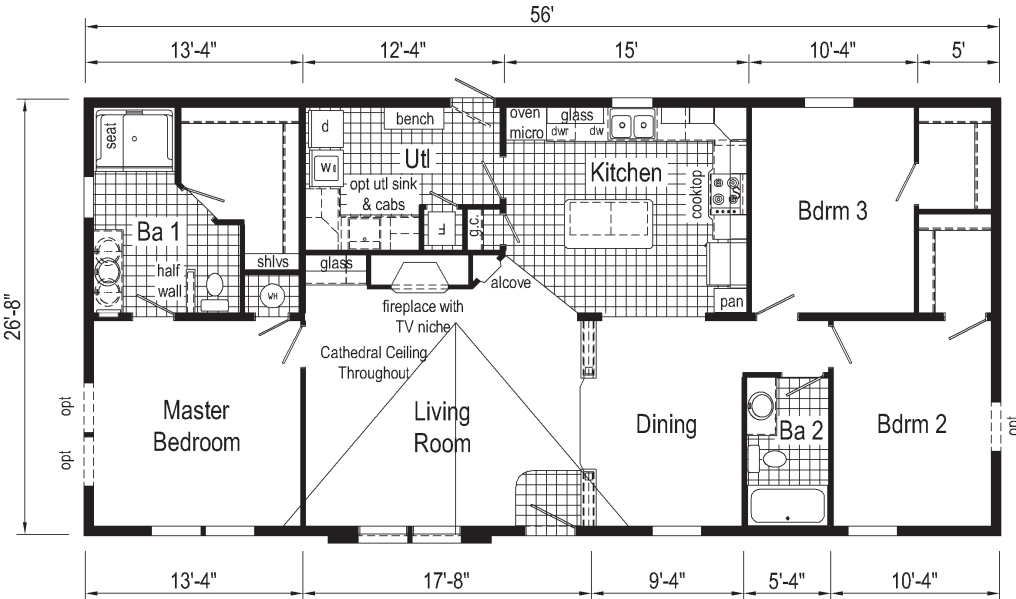


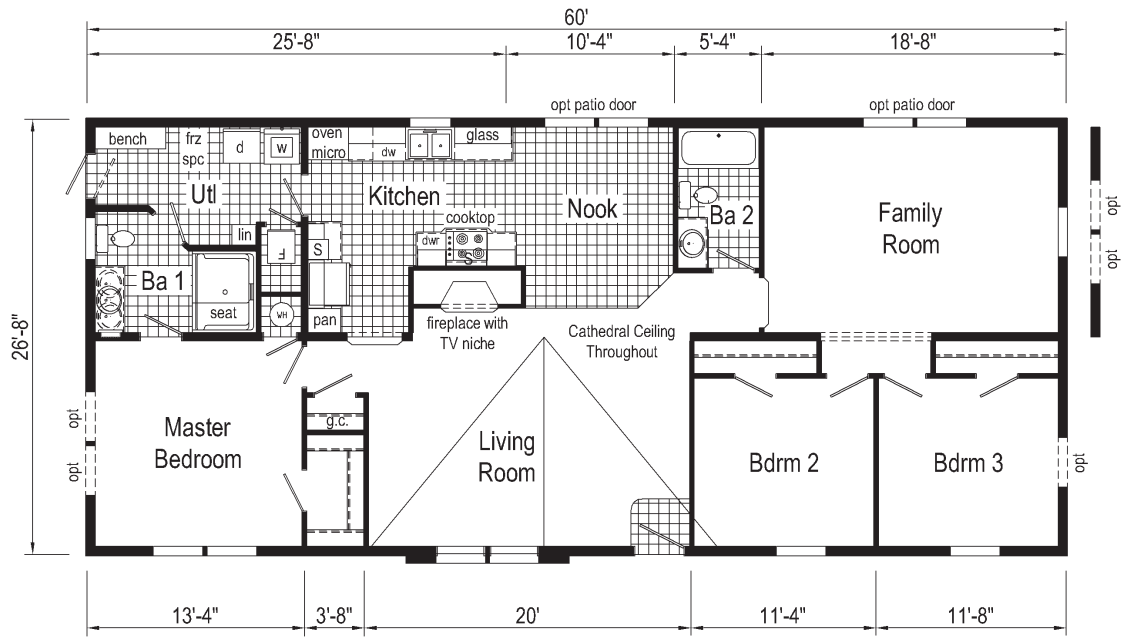
DH502A 2856
Approx 1493 Sq Ft



Optional Open Stairwell

Size of Kitchen is reduced 21" w / Opt. Stairwell

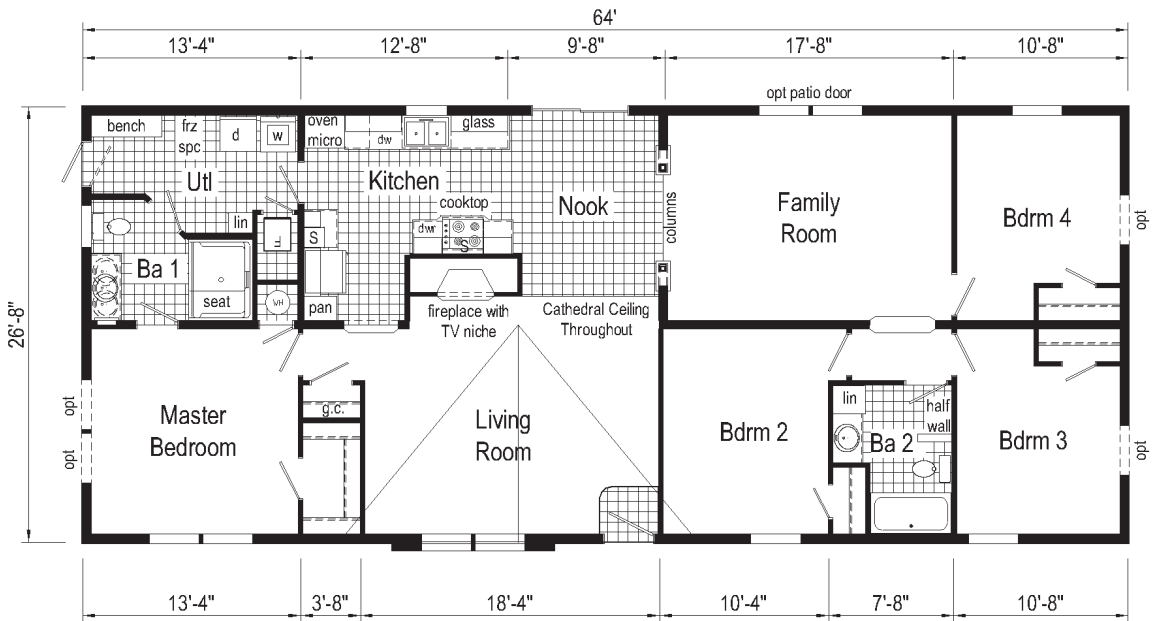
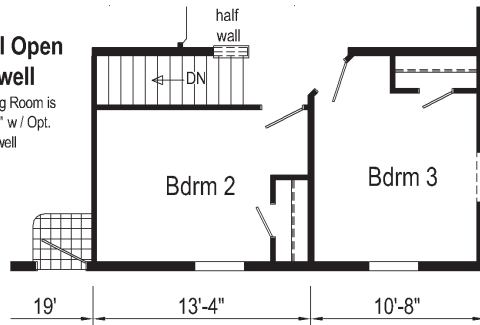




DH503A 2860
Approx 1600 Sq Ft

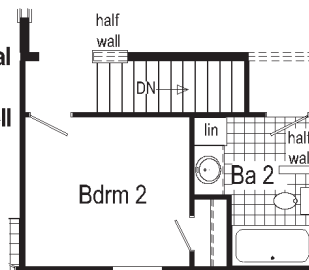
Optional Open Stairwell

Size of Living Room is reduced 12" w / Opt. Stairwell



DH504A 2864
Approx 1707 Sq Ft

Optional Open Stairwell



HEARTHSTONE RANCH HOMES

Standard Features - 10 Year Warranty

INTERIOR

Primed Smooth Drywall Throughout – Excluding Closets
Cathedral Ceiling Throughout
Stipple Ceiling
7'0" Sidewall Height
Textured Carpet with ShawGuard Carpet Protector, Rebond Pad and Tack Strip
Wood Burning Fireplace with Stone Surround in Living Room
Foyer Entry with Vinyl Flooring
No-Wax Vinyl Floor Coverings by Congoleum
Ceiling Paddle Fan with Light in Living Room and Family Room
5-Arm Brushed Nickel Dining Room Light
Scavo Nook Light
Glass Light Shades Throughout
White 6-Panel Interior Doors
Pinned Non-Mortise Hinges
Metal Interior Passage Sets
Floor Mount Door Stops
Designer-Coordinated Window Treatments
Deluxe Moulding Package

KITCHEN

Classic Craft Cabinetry (KCMA Approved)
Hardwood Flat Panel Cabinet Doors
Drawer over Door Base Cabinets
Upgrade Cabinet Hardware
Concealed Cabinet Hinges
Pot and Pan Roll-Out Shelf in One Base Cabinet
Under Cabinet "Bottom" Trim
30" Lined Overhead Cabinets
Adjustable Shelves in Overhead Cabinets
Deluxe Roller Guide Drawer System
Adjustable Center Shelf in Base Cabinets
25" High-Pressure Laminate Countertops with 4" Ceramic Backsplash
No-Wax Vinyl Floor Coverings by Congoleum
Cabinet over Refrigerator
Stainless Steel Sink - 33x19x7
Empire Brushed Nickel Faucet
Recessed Fluorescent Light
Light over Kitchen Sink with Separate Switch

APPLIANCES

21 Cu. Ft. 2 Door Frost Free Refrigerator with Ice Maker
30" Deluxe Electric Surface Burner
Built-In Electric Wall Oven and Microwave
Brilliant Clean Dishwasher

BATHS

60" Fiberglass Shower with Seat – Bath 1
Recessed Medicine Cabinet
16" x 32" Skylight – Bath 2
Deluxe Overdrape – Bath 2
1.6 Gallon Per Flush Toilets
Vitreous China Stool, Tank and Lid
Vitreous China Bathroom Sinks with Overflows and Pop-Up Drains
High-Pressure Laminate Countertops with 4" Ceramic Backsplash
Lighted Vent Fan in Each Bath
Hardwood Flat Panel Cabinet Doors
Upgrade Cabinet Hardware
Concealed Cabinet Hinges
Base Shelf in Vanities
Bath Linen – Selected Models
33" High Vanities
GFI Receptacle
Empire Brushed Nickel Faucets

BEDROOMS

Ceiling Lights
Smoke Detector Protection Each Bedroom
Egress Window Each Bedroom
Wire Shelving in Wardrobes
Switched Light in All Walk-In Closets
Professionally Coordinated Drapes

UTILITIES

Washer and Dryer Area
Laundry Overhead Shelf
200 AMP Electrical Service
Copper Wire Throughout – Fully Grounded
Gas Black Piping with Value at Furnace and Range
Plumb and Wire for Washer
Beauty Ring Seals – Plumbing Lines
Wire and Vent for Dryer
40 Gallon Electric Water Heater with Pan
Auto Ignition Furnace:
#M1-MB077ABW – 56 and Under
#M1-MB090ABW – 60 and Over
Flush Woodgrain Furnace Door
Air Exchanger System for Furnace

UTILITIES cont.

Perimeter Heat System
Aluminum Heat Ducts
In-Floor Cross-Over Heating System
Copper Wiring Throughout
Main Water Line Shut-Off Valve
One Exterior Frost Free Faucet
Water Shut-off Valves Where Accessible
Programmable Thermostat
Front Door Chime

INSULATION

R-22 Fiberglass Insulation in Floor
R-19 Fiberglass Insulation in Walls
R-38 Avg. Blown Insulation in Ceiling

EXTERIOR

Two Bronze Cast Aluminum Coach Lights at Front Door
Brushed Nickel Coach Light at Rear Door
Two GFI-Protected Exterior Receptacles
Vinyl Dutch Lap Siding with 7/16" OSB Sheathing Under Siding
Wind Wrap Air Infiltration Barrier
Self-Sealing Fiberglass Shingles with a 20 Year Warranty
Ridgevent Roof Ventilation System
38x76 6-Panel Fiberglass Front Door with Sunburst, Storm Door and Deadbolt Lock
34x76 6-Panel Fiberglass Rear Door
Box Bay Window
Vinyl Insulated Windows with Grids and Low-E Glass
Residential 22' Double Dormer
15" Louvered Shutters on Door Side

CONSTRUCTION

Energy Star Certified on Select Models
2x6 Transverse Floor System on 24" Centers
2x6 Exterior Walls on 16" Centers
30# Roof Load
Recessed Frame Design
Detachable Hitch
HUD Seal

MHWC
MANUFACTURED/HOUSING/WARRANTY/CORPORATION®

www.commodore-pa.com



P.O. BOX 349
CLARION PA 16214
(814) 226-9210

info_pa@commodorehomes.com

All descriptive representations of the products on this brochure are believed to be correct at the time of publication. However, due to continued product improvement and changes in suppliers design and production, accuracy cannot be guaranteed. Therefore, equipment colors, material specifications, prices and model availability are subject to change without notice.

YOUR INDEPENDENT RETAILER IS:

Your purchase contract including options is with your retailer who is an independent contractor, not our agent, and is responsible totally for any alterations, exchanges, additions or attachments made in or to your home. DP22641 2M 9/09